



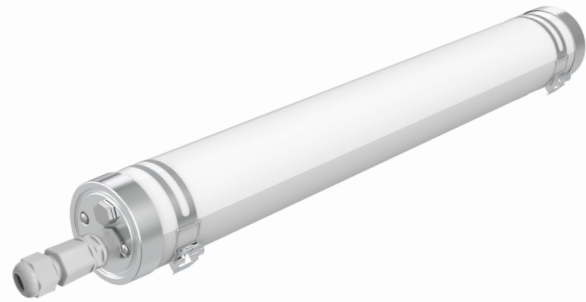
LUNOCOS

SOLINAS

IP69K LED Tri-proof Light

- IP69K
- High lumen efficiency, 140lm/W.
- Pendant/ Surface mounted installation.
- Adjustable install angle with different lighting angle.
- Application: Livestock, Industrial, Maritime, Food industry, Car washing

IP69K LED Tri-proof Light



140lm/W

Specification | Technical & Product Data:

LED TYPE	SMD 2835
Wattage	36 W
Frequency	50-60 HZ
Power Factor	>0.9
Light color	Natural white
Color Temperature	4000 K
SDCM	<5
Light efficiency	typ. 140 lm/W
Luminous flux	typ. 5040 lm
CRI	>80
Size	1225*75mm
Lifespan L80/B10	50000 hrs at 25 °C
IP/IK rate	IP66 / IK07
ON/Off cycles	>30000
Working conditions	-20 °C - 45 °C
Material	PC
Body Color	White
Certification	CE ERP ROHS UKCA
Type of light source	D
Warranty	5 Years



IK07

IP66

CE

ErP

RoHS

UKCA